



## Model 31A00-1 Indoor/Outdoor Temperature Sensor

### DESCRIPTION

When connected to an HAI controller, the Model 31A00-1 Indoor/Outdoor Temperature Sensor is used for sensing indoor or outdoor temperature. The Model 31A00-1 features a new, high accuracy temperature sensor that doesn't need calibration.

The temperature can be used to activate programs for controlling temperatures indoors and in attics, garages, greenhouses, basements, wine cellars, and coolers. The temperature can be displayed on the console or spoken over the telephone. It can also report, log, alert, or generate an alarm if the temperature reaches freeze conditions or if the temperature goes above the high setpoint or drops below the low setpoint programmed in the system.

When used outdoors, the Model 31A00-1 should be mounted under an overhang to protect it from direct sunlight and rain. It is coated with a sealant to withstand outdoor moisture. The outdoor temperature can be displayed on the console, spoken over the telephone, or displayed on an HAI communicating thermostat. Automation programs, macros, and indoor appliances can be controlled based on the outdoor temperature.

### INSTALLATION

1. Each Model 31A00-1 requires one zone input. Run a 4-conductor wire from the controller location to each Model 31A00-1.
2. Mount the Model 31A00-1 using the supplied wall anchors and screws. For optimal temperature readings, mount it vertically so that the white arrow (silk-screened onto the board) points upward as shown in FIGURE 1. The plastic enclosure must be mounted so that the airflow slots are at the top and bottom. Connect to controller as shown in FIGURE 1.
3. Program the zone type for each Model 31A00-1 as an Outdoor Temperature (Type 81), Temperature (Type 82), or Temperature Alarm (Type 83) based on the application.

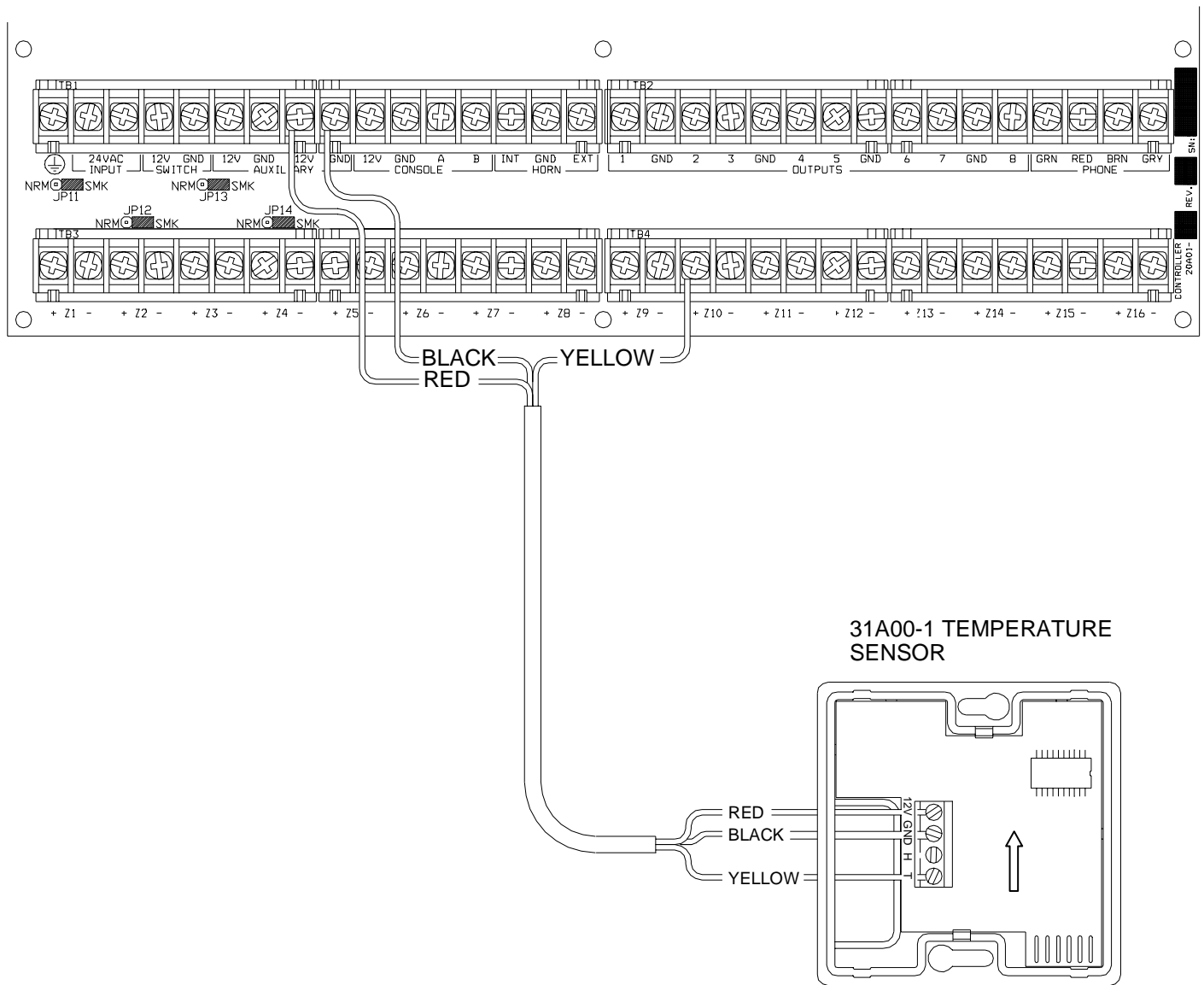
### SPECIFICATIONS

Dimensions: 2.75W x 2.75H x 1D

Temperature Range: 0° F - 120° F

Current Consumption: 15mA maximum

(Connections Diagram on Next Page)



**FIGURE 1 – MODEL 31A00-1 CONNECTIONS**