

Configuring Intercom on OmniTouch 5.7e

HAI Automation Studio must be used to enable and configure the intercom, configure a VoIP SIP door station, assign cameras to each touchscreen, and update each of the respective touchscreens with the new design.

Note: Intercom functionality requires Firmware Version 3.0.0.4 or later (USB update) in each OmniTouch 5.7e Touchscreen and must be updated with Automation Studio 1.0.2.140 or later.

Enabling the Intercom

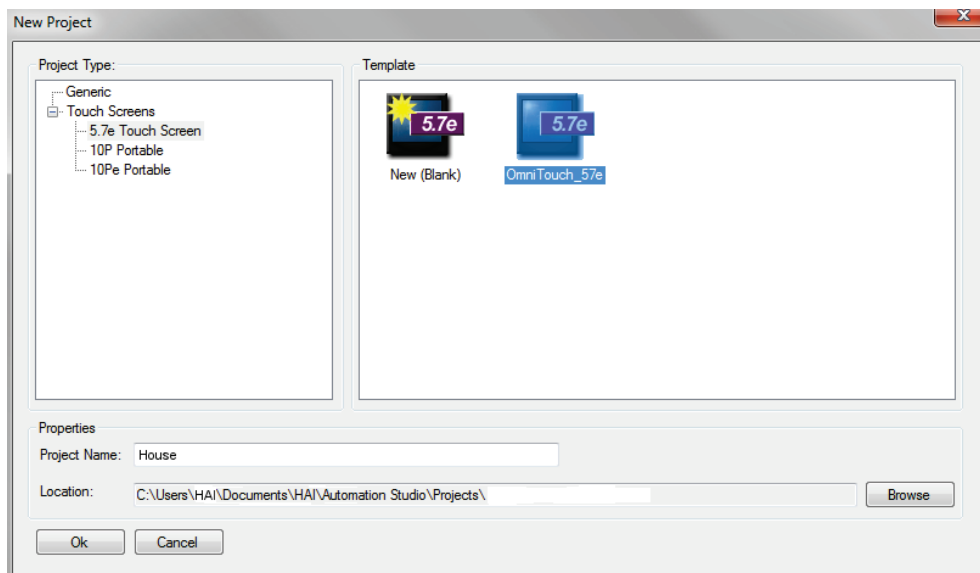
Using HAI Automation Studio, you must add and discover touchscreens, add VoIP SIP door stations (optional), and add cameras (optional), to your touchscreen design.

Intercom functionality was added to Automation Studio in Version 1.0.2.140. If you have a touchscreen design that was created in Automation Studio prior to Version 1.0.2.140, you must import the intercom pages and add the intercom button to the Main Menu as described under **Adding Intercom to an Existing Design** in this document. If you are adding the intercom functionality to an existing project, skip **Creating a New Project with Intercom** and **Adding Touchscreens to the Project**.

Creating a New Project with Intercom

To create a new Automation Studio Project with touchscreens that will use the intercom features:

1. Start HAI Automation Studio and create a new project.
2. Select **5.7e Touch Screen** as the **Project Type** and select **OmniTouch_57e** as the **Template**.
3. Give a name the project next to **Project Name** under **Properties**.

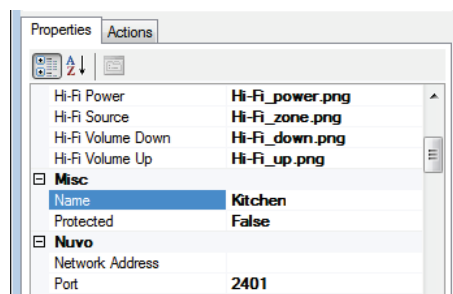
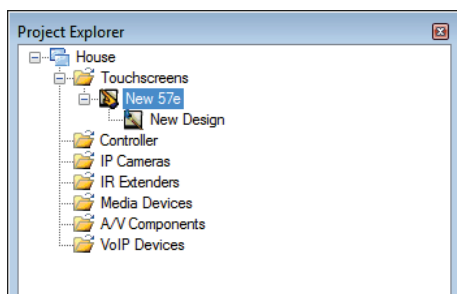


Adding Touchscreens to the Project

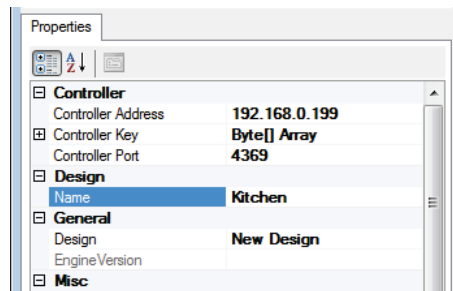
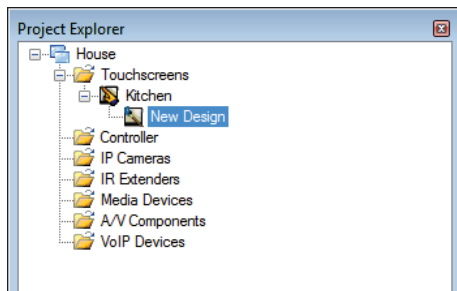
To use the intercom features of the OmniTouch 5.7e, two or more touchscreens, or one or more touchscreen and one or more VoIP SIP door stations must be added to the project.

When the project was created (using the steps above), one touchscreen was automatically added to the project along with a touchscreen design. The touchscreen and design was given a default name. It is generally a good idea to rename the touchscreen and the project that better describes where the touchscreen is installed. For example, if the touchscreen is installed in the kitchen, the touchscreen and the design should be named **Kitchen**.

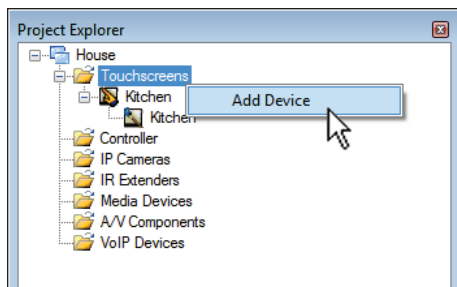
1. In **Project Explorer**, click on the touchscreen that was added.
2. Select the **Properties** tab. Give a name to the touchscreen next to **Name** under **Misc**.



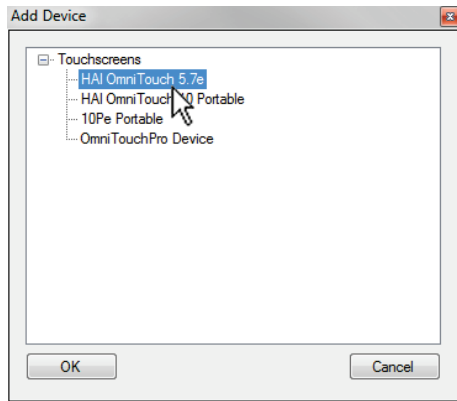
3. In **Project Explorer**, click on the design under the touchscreen that was just named.
4. Select the **Properties** tab. Give a name to the design next to **Name** under **Design**.



5. Add another touchscreen to the project by right-clicking on **Touchscreens** under **Project Explorer** and select **Add Device**.

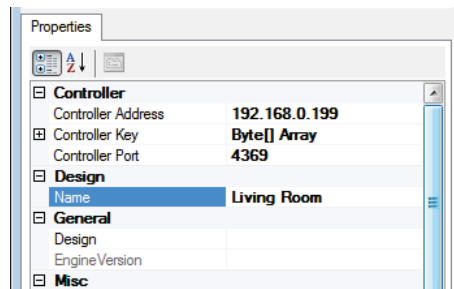


6. From the **Add Device** dialog, select **HAI OmniTouch 5.7e** under **Touchscreens**.



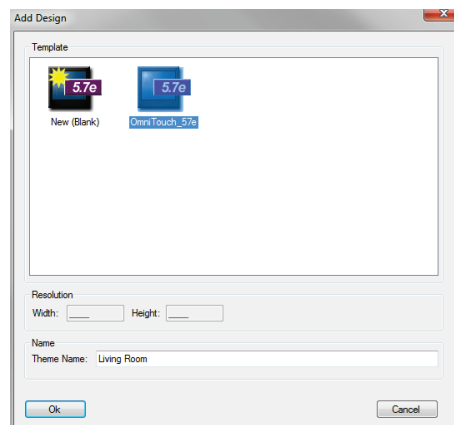
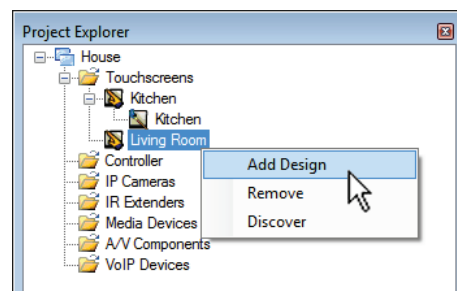
7. In **Project Explorer**, click on the touchscreen that was added.

8. Select the **Properties** tab. Give a name to the touchscreen next to **Name** under **Design**.



9. In **Project Explorer**, right-click on the touchscreen that was added and select **Add Design**.

10. From the **Add Design** dialog, select **OmniTouch_57e** as the **Template** and give a name the design next to **Theme Name** under **Name**.



11. Repeat for each touchscreen installed.

12. When complete, skip to the section entitled **Discovering the Touchscreens** in this document.

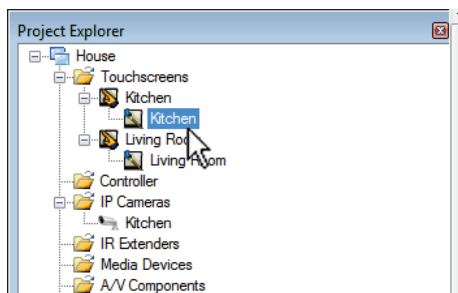
Adding Intercom to an Existing Design

If you have an existing Automation Studio project with a custom design, you can add the intercom functionality by importing the intercom pages and adding the intercom button to the Main Menu as described below.

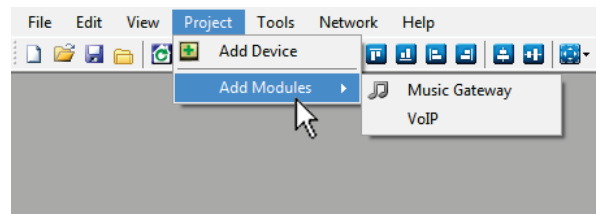
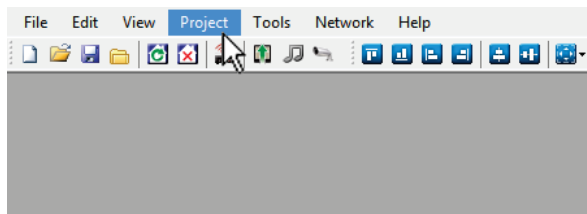
Importing the Intercom Pages

To use the intercom functionality in an Automation Studio design that was created in a version of Automation Studio prior to Version 1.0.2.140, you must import the intercom pages using the **Add Modules** feature in Automation Studio.

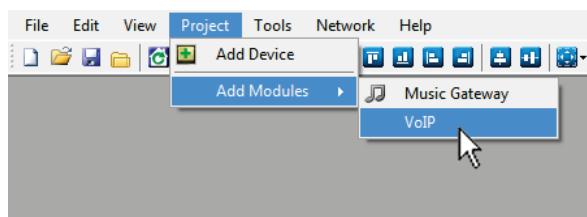
1. In **Project Explorer**, open the canvas a touchscreen design by double-clicking on the touchscreen design.



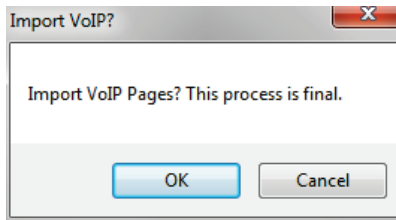
2. From the Menu Bar in Automation Studio, select **Project**.
3. From the **Project** menu, select **Add Modules**.



4. From the **Add Modules** menu, select **VoIP**.



5. A dialog is displayed to confirm the import of the intercom pages.



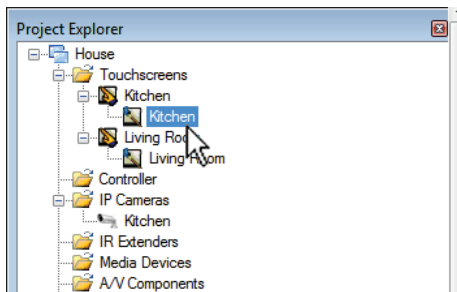
Once confirmed, the import cannot be undone. Before confirming, make sure that the intercom pages do not already exist. If they do, duplicate pages will be added.

6. Click **OK** to add the pages.
7. Repeat this process for each touchscreen design under **Project Explorer**.

Adding the Intercom Button to the Main Menu

After the intercom pages have been imported, you must add an Intercom button on the Main Menu for each touchscreen design.

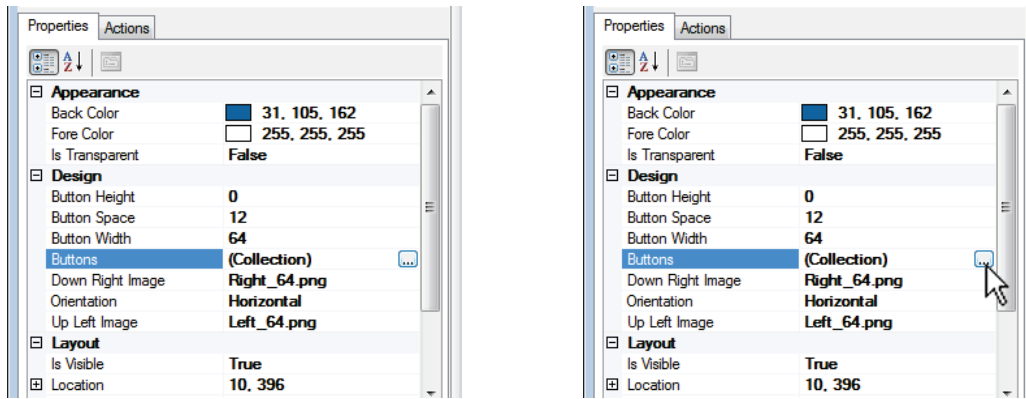
1. In **Project Explorer**, open the canvas a touchscreen design by double-clicking on the touchscreen design.



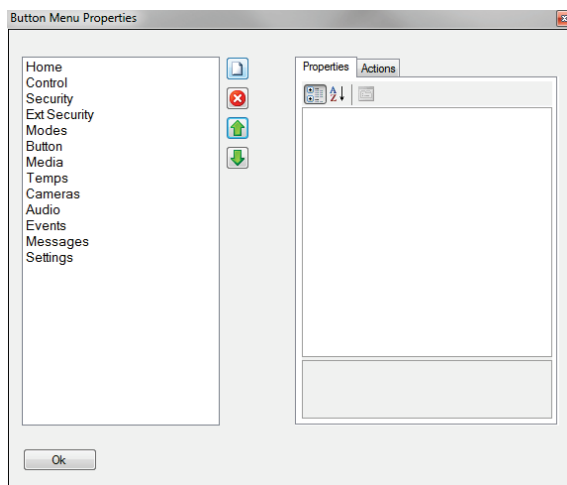
2. On the design canvas, click on the Main Menu bar to highlight it.



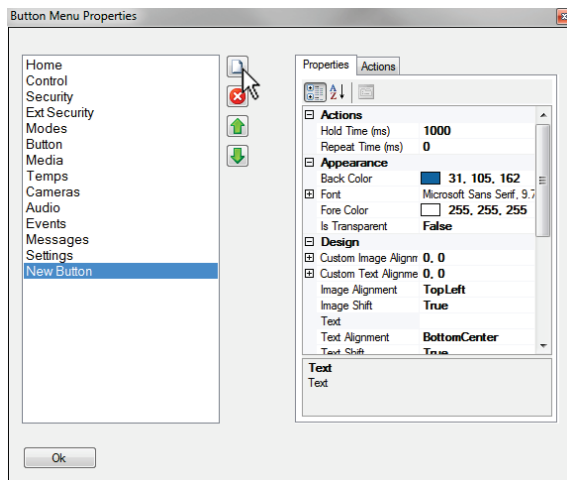
3. Select the **Properties** tab. Under **Design**, click on **Buttons**.



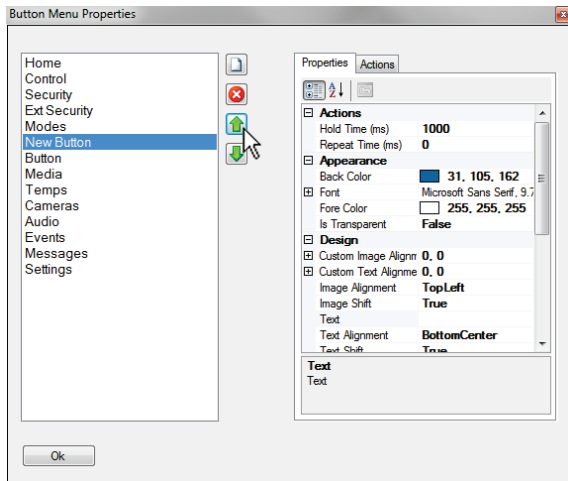
4. Click on the box next to **(Collection)** to open the **Button Menu Properties** dialog.



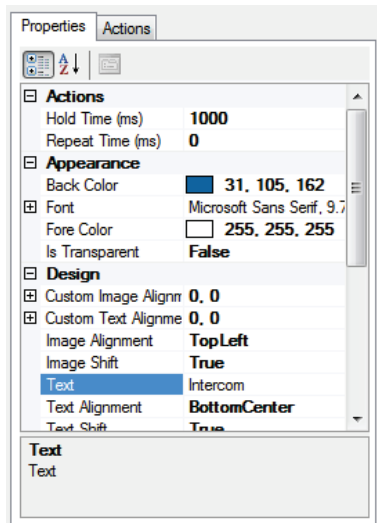
5. Click on the page icon to add a new button.



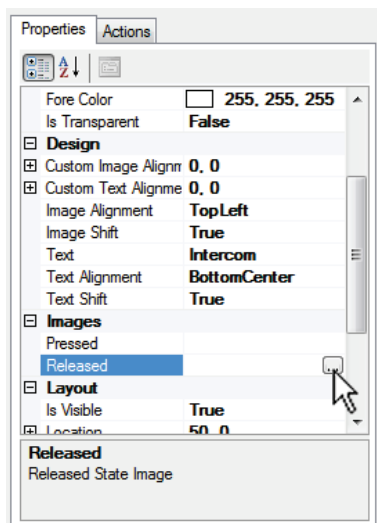
6. Use the arrow buttons to move the **New Button** to the desired location in the **Main Menu**.



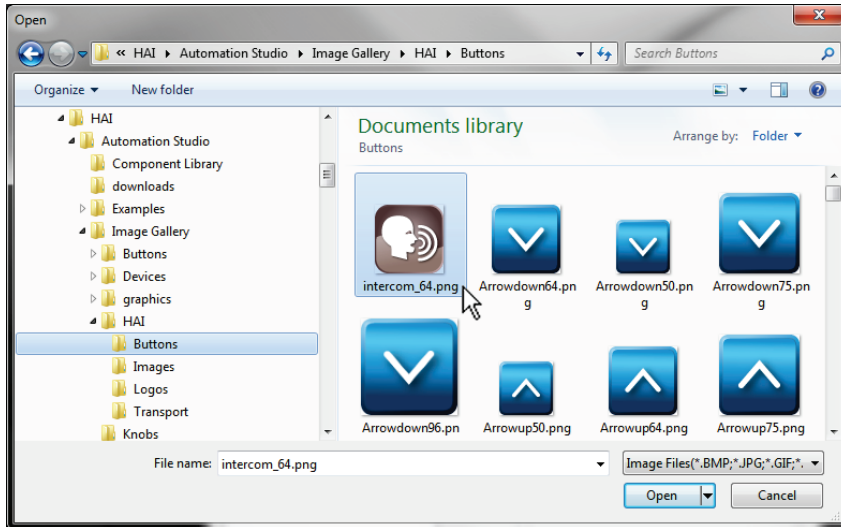
7. With the **New Button** highlighted, select the Properties tab. Give a name to the button next to **Text** under **Design**.



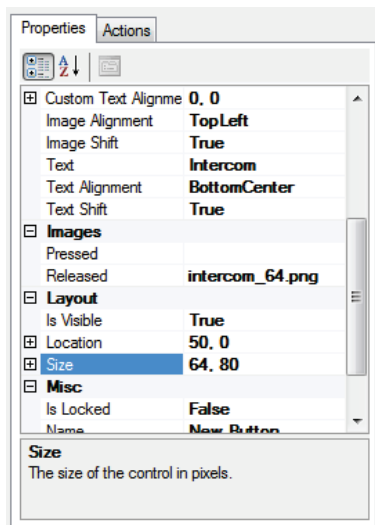
8. Under **Images**, click the box next to **Released** to open the Documents Library.



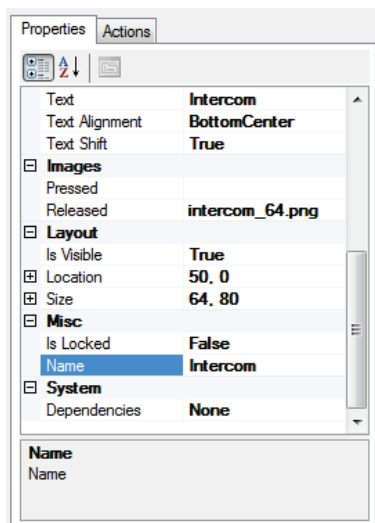
9. Browse to “..\HAI\Automation Studio\Image Gallery\HAI\Buttons” and select the icon with the filename “intercom_64.png”.



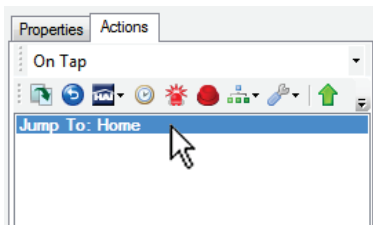
10. Under **Layout**, change the size of the button to **64, 80** next to **Size**.



11. Under **Misc**, give a name to the button object next to **Name**.

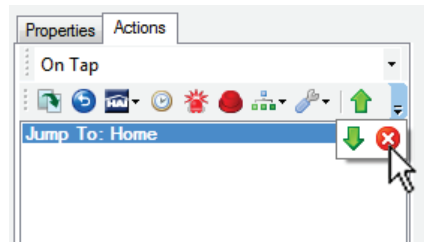
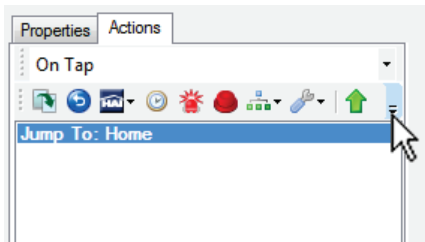


12. Select the **Actions** tab. Click on the **Jump To: Home** action to highlight it.

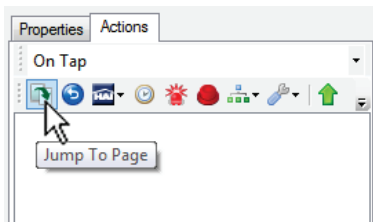


13. Click on the arrow button to expose the **Delete** icon.

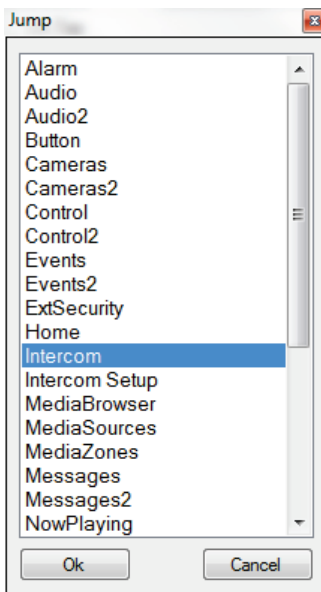
14. Click the Delete button to delete the **Jump To: Home** action.



15. Click the **Jump To Page** icon.



16. Select **Intercom** from the list in the **Jump** dialog, and then click **OK**.



17. Click **OK** on the **Button Menu Properties** dialog.

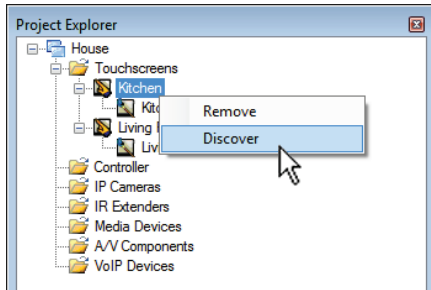
18. Repeat this process for each touchscreen design under **Project Explorer**.

Discovering Touchscreens

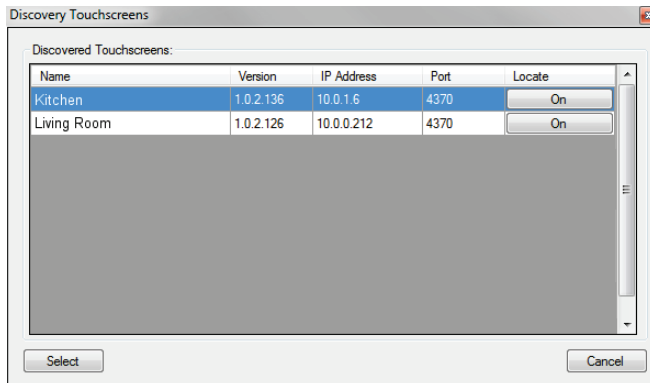
To use the intercom features of the OmniTouch 5.7e, you must use Automation Studio to discover the touchscreens that will be using the intercom. This step allows each of the touchscreens to know about the other touchscreens in the installation so that they can communicate using the intercom.

To discover a touchscreen:

1. In **Project Explorer**, right-click on a touchscreen and select **Discover**.



2. In the **Discovery Touchscreens** dialog, select the respective touchscreen from the list and then click **Select**.

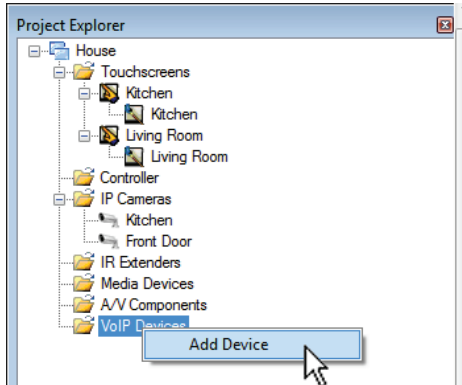


3. Repeat this process for each touchscreen installed under **Project Explorer**.

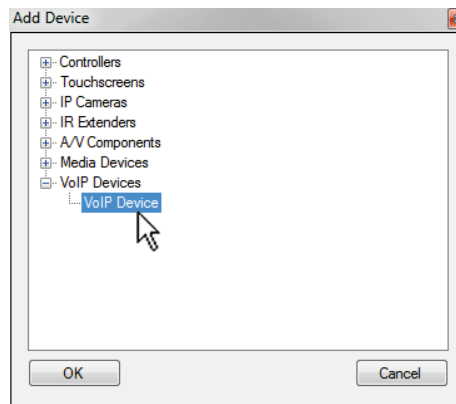
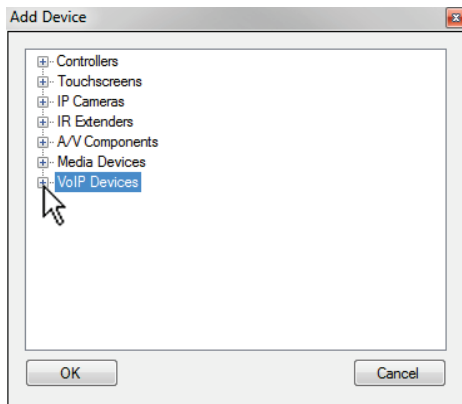
Adding a VoIP SIP Door Station (Optional)

To communicate with a VoIP SIP Door Station, configure the following in Automation Studio:

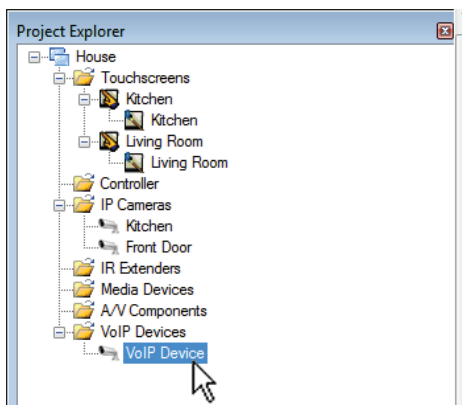
1. In **Project Explorer**, right-click on **VoIP Device** and select **Add Device**.



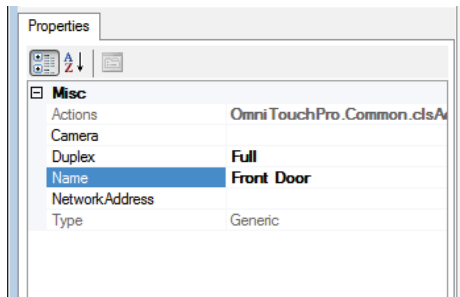
2. From the **Add Device** dialog, click **+** next to **VoIP Device**.
3. Click on **VoIP Device** under the **VoIP Device** in the list to highlight it.
4. Click **OK**.



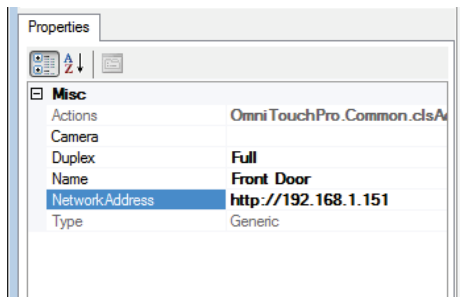
5. In **Project Explorer**, click on **VoIP Device** under the **VoIP Device** in the list to highlight it.



6. Select the **Properties** tab. Under **Misc**, give a name to the door station next to **Name**.



7. Under **Misc**, enter the IP address of the door station next to **Network Address**.

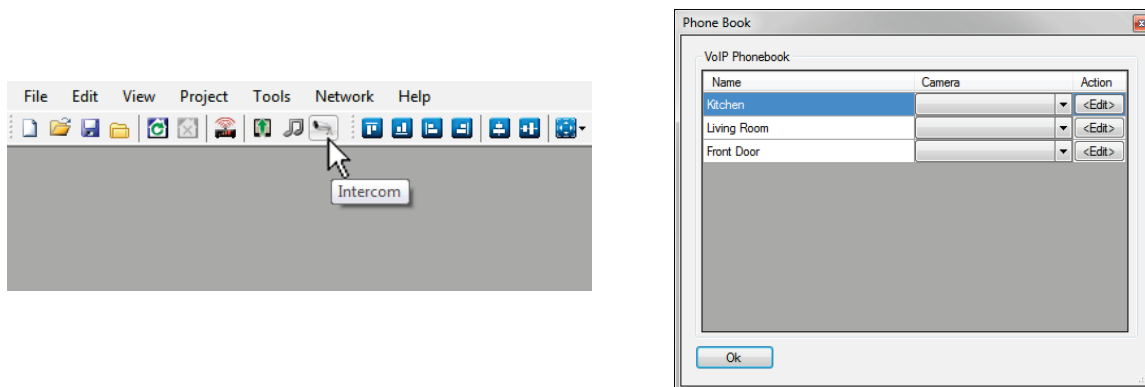


Assign Cameras (Optional)

To view a camera on the intercom page from a touchscreen that is calling or being called, you must assign a camera to that touchscreen.

Note: This example assumes that cameras have already been added to the project.

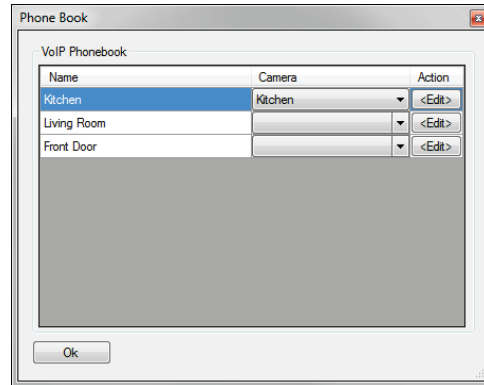
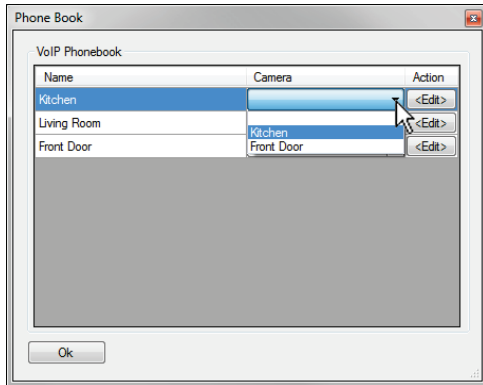
1. Click the **Intercom** icon on the toolbar to display the **Phone Book** dialog.



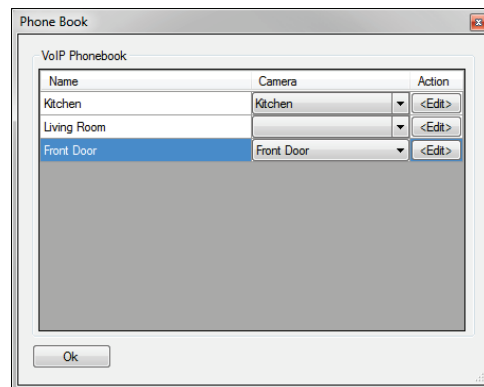
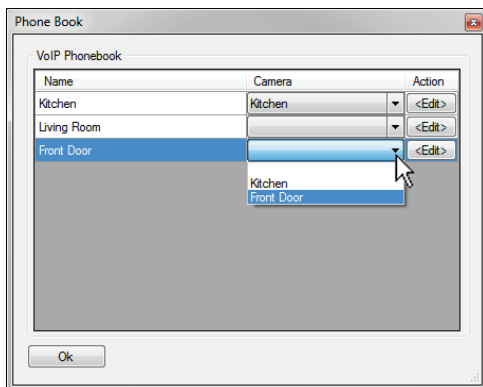
2. From the **VoIP Phonebook**, assign a camera that will be associated with each touchscreen and/or door station (if desired).

Note: In this example, we will assign a camera that is associated with the Kitchen. Whenever the Kitchen touchscreen calls another touchscreen or when a touchscreen calls the kitchen, the camera associated with the Kitchen touchscreen will be displayed.

3. Click the arrow button under **Camera** next to the desired touchscreen to display a list of available cameras.



4. If desired, click the arrow button under **Camera** next to the desired door station to display a list of available cameras.



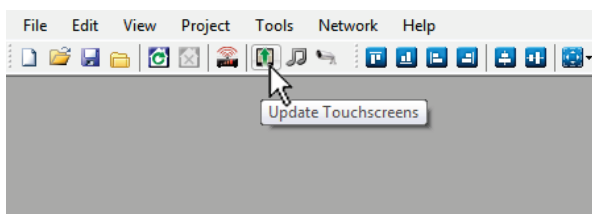
5. When complete, click the **Ok** button.

Updating the Touchscreens

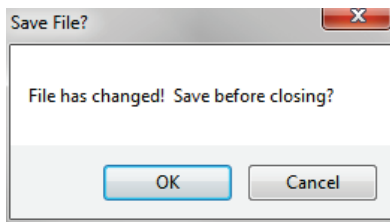
The final step in enabling intercom is to update each touchscreen using Automation Studio.

To update the touchscreens:

1. Click the **Update** icon on the toolbar.

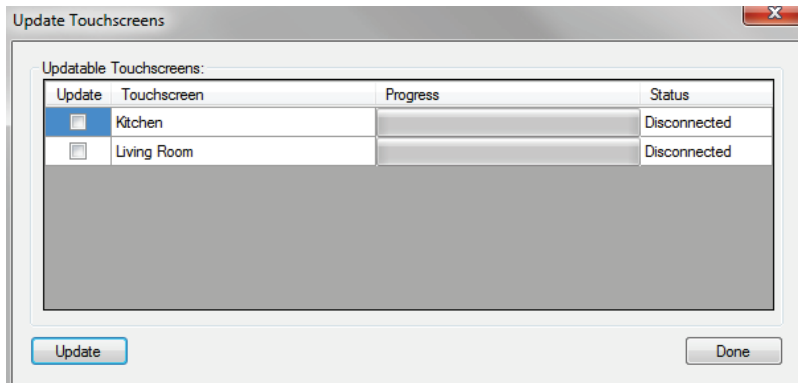


2. If the project has not been saved, you will be prompted to save.

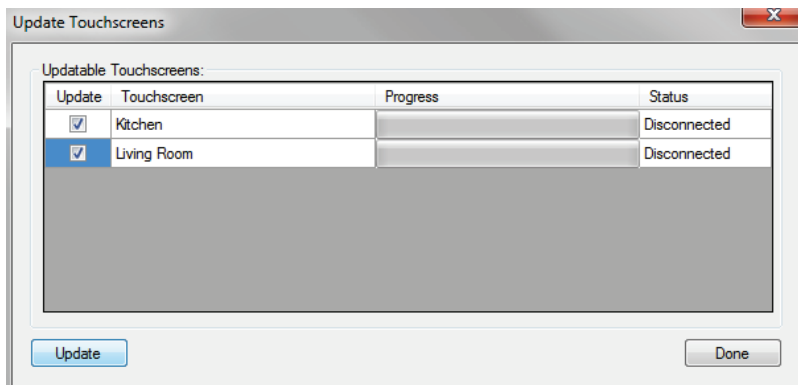


3. To save the project and continue with the update, click **OK**.

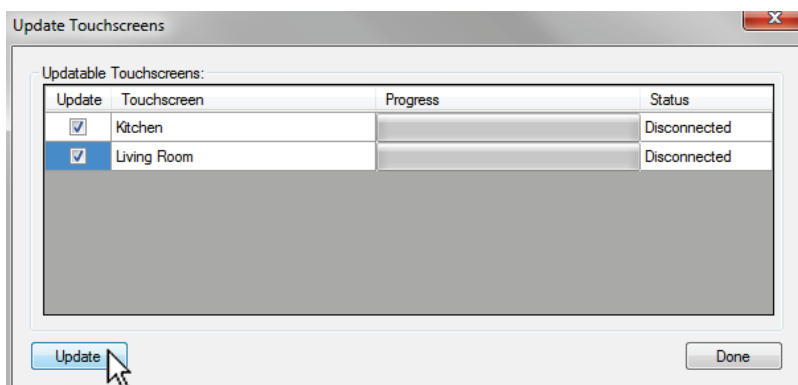
4. All discovered touchscreens are displayed in the **Update Touchscreens** dialog.



5. Put a check in the boxes under **Update** to select which touchscreens will be updated.



6. Click the Update button to update the selected touchscreens.



7. After the update is complete, the touchscreens will have intercom functionality.