



ZigBee® Pro technology establishes a standard approach for wireless products worldwide, eliminating the need for proprietary technology. Home automation solutions can take advantage of a consistent wireless communication technology which offers unprecedented benefits in operational reliability, control, convenience, and security.

ZigBee® Interface Module

81A00-3ZB



Wireless interface and coordinator for ZigBee® products. Plugs into serial port on an HAI Omni or Lumina family controller and allows control of HAI wireless energy management components. Display used for advanced configuration and diagnostics.

Designed for the ZigBee® Pro Home Automation Profile.
Six foot serial cable included.
Powered by the HAI Omni or Lumina controller.

15A Plug-In Load Control Module

89A00-1ZB



Perfect for appliances, fans, and lamps up to 15A. Compatible with all 120VAC/60hz utility regions. The simplest way to add ZigBee® Pro wireless technology control.

Designed for the ZigBee® Pro Home Automation Profile.
0.50 horsepower
120VAC/60hz

Omnistat2 Wireless Thermostats

RC-2000WHZB and RC-1000WHZB



Choose from the Multistage & Heat Pump with Humidity Control model (RC-2000WHZB) or the Single-State Conventional & Heat Pump with Auxilliary Heat model (RC-1000WHZB).

Designed for the ZigBee® Pro Home Automation Profile.
Include all the features of their non-wireless counterparts.
Available in white, black, or silver finishes.

5A/30A Load Control Modules

73A00-4ZB

73A00-3ZB



The 5A model controls low voltage circuits in outdoor air conditioner units, pool and spa heaters and pumps, generators, and similar devices. The 30A model is perfect for wirelessly controlling water heaters, pool pumps, outdoor fountains, lighting, and more.

Designed for the ZigBee® Pro Home Automation Profile.
Ultra-low standby power.
Universal 96-250VAC and 50/60hz.



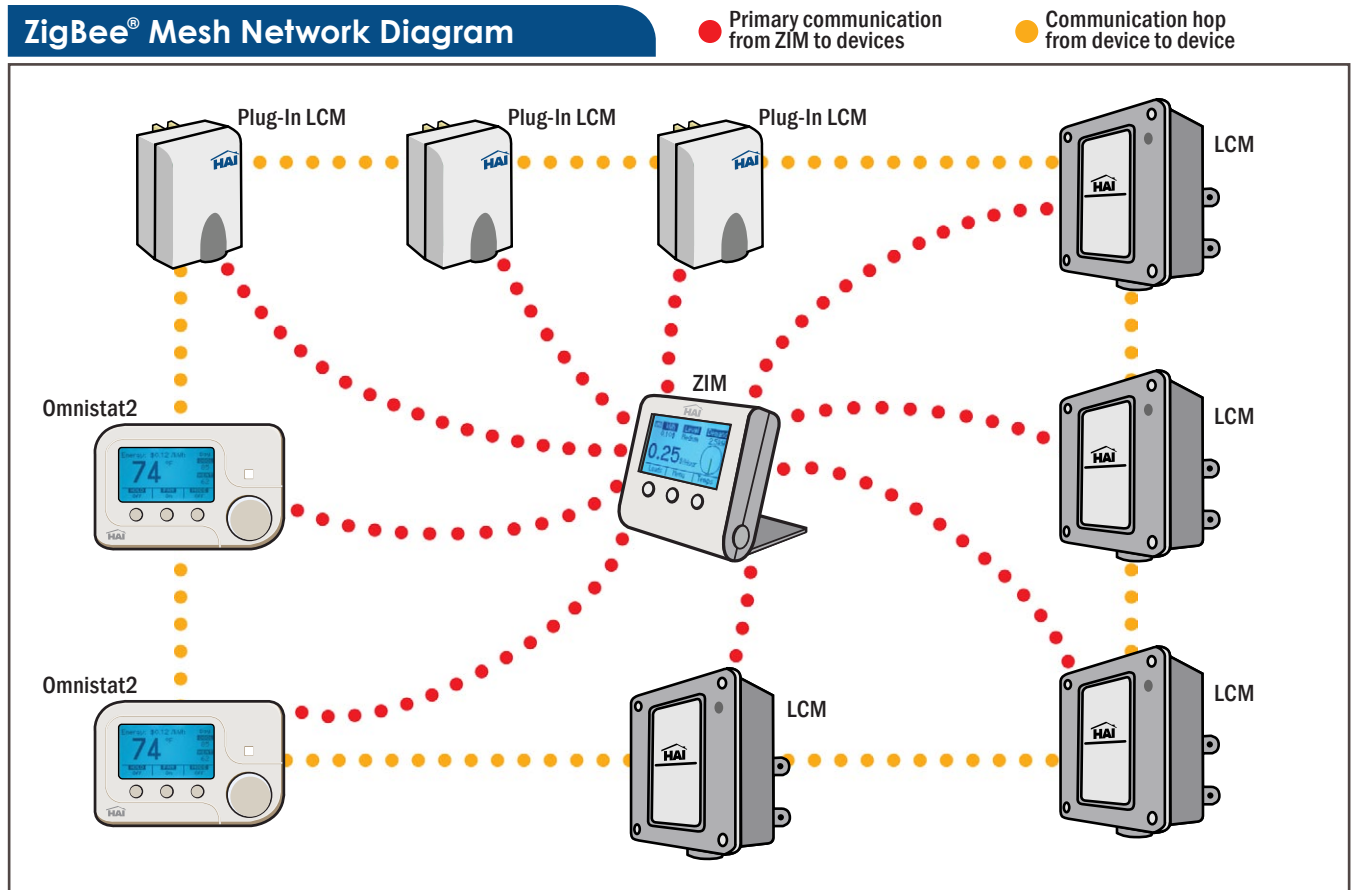


These products communicate through a mesh network between the ZigBee® Interface Module (ZIM) and controlling ZigBee® devices. The ZIM is also designed to communicate with ZigBee® Pro Home Automation Profile products from other manufacturers thereby expanding compatibility.*

HAI's ZigBee® Pro products are equipped with high-powered ZigBee® radios to ensure enhanced signal strength and range. These devices possess a 200' (61m) maximum single line of sight transmission under optimal conditions. Device-to-device hops expand that range significantly.

Each point-to-point communication is referred to as a "hop." Adding more devices to the network increases the efficiency of the network due to increased numbers of hops available. A maximum of 64 devices can be utilized on a single network and each device can operate a maximum of five hops.

While communication for each device is wireless, power sources are conventional. The ZIM is powered by its direct connection to the Omni or Lumina home automation controller via the included serial cable. The 5A and 30A Load Control Modules (LCMs) are powered by the same circuit powering the appliance a given LCM controls. Omnistat2 Programmable Communicating Thermostats (PCTs) receive power via traditional HVAC wiring.



*Visit www.homeauto.com for a list of compatible devices.

