



Model 62A03-1 Volume-Source Control (VSC)

DESCRIPTION

The audio sources can be selected and controlled by any Volume-Source Control (VSC). The VSC provides the capability to change the power state, volume, balance, treble, and bass settings for each zone. Additionally, each VSC include an IR receiver that allows you to remotely control the Hi-Fi system and/or audio sources from any zone in the house.

INSTALLATION

Volume-Source Control (VSC) Units connect directly to the Hi-Fi Main Assembly using Cat 5, unshielded, twisted pair (UTP) for communications. Each end of the wire is terminated with an RJ45 connector. The correct wiring scheme for the Cat 5 cable is standard EIA/TIA 568A. Properly terminating the Cat 5 cable is crucial for the operation of the system.

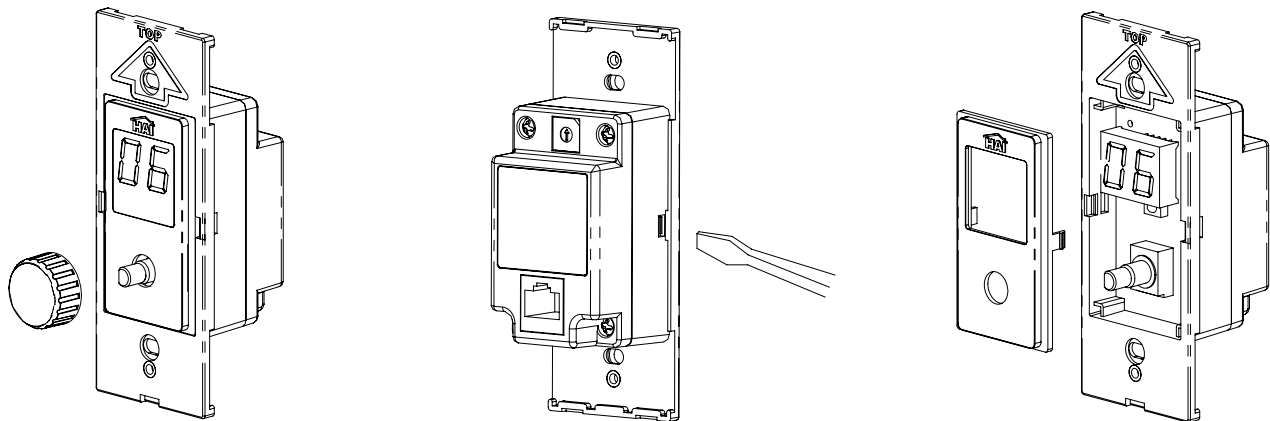
The total distance of Cat 5 between the Hi-Fi Main Assembly and the VSC units must not exceed 2000 feet. It is best that no single run of Cat 5 exceeds 250 feet.

Insert the RJ45 connector on one end of the cable to zone input jack (1-8) under “Zone Control / IR In” on the Hi-Fi Main Assembly. Insert the RJ45 connector on the other end of the cable to the jack labeled “Zone Control” on the VSC.

CHANGING THE COLOR OF THE VSC

The color of the VSC may be changed to complement the interior décor. The VSC is supplied with a white faceplate, knob, and insert. Additional colors are available; contact your HAI distributor for more information. Change the color of the RIM as follows:

1. Remove the faceplate. Firmly grasp the knob and pull straight outward until the knob is removed.
2. The insert attaches to the VSC with one latch on the right and one on the left. Using a small-bladed screwdriver, gently depress the latch on one side while lifting up on the insert. Once the latches are released on one side, remove the insert from the other side.
3. Align the latches of the new insert to the openings on the RIM and gently snap into place.
4. Insert the new knob onto the volume control shaft. Attach the new faceplate.



SETTING THE ZONE ADDRESS

Although the Hi-Fi Main Assemble has separate RJ45 connectors for each zone, each VSC must be configured to a specific zone address to establish its location. This setting is made on the back of the VSC using a rotary switch. To set the zone address, place a small screwdriver in the slot on the rotary switch and turn it to the appropriate zone address number 1-8

